



HELPING

YOUTH

THRIVE

4-H THRIVING MODEL



4-H Thriving Model (Arnold, 2018)





Dodge County

Wisconsin 4-H Thriving Model Survey Report

2023

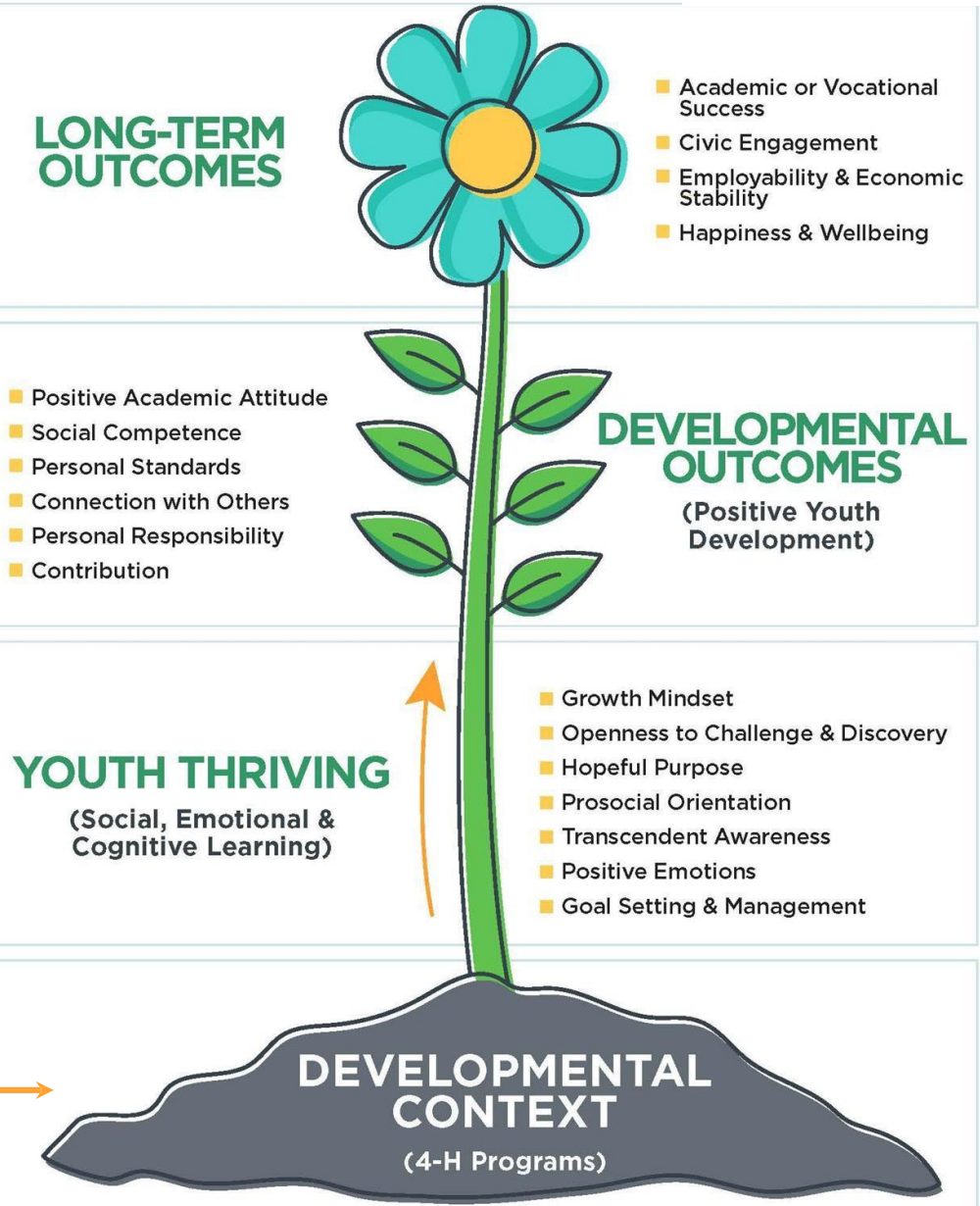
of Eligible Youth: 249
(Members age 13 and older)

of Youth Surveyed: 62

Response Rate: 28%

DEVELOPMENTAL CONTEXT

- Sparks
- Belonging
- Caring Adults
- Challenging Growth
- Youth-Adult Partnerships





UW-MADISON EXTENSION



Wisconsin 4-H Thriving Model Survey Report

2023

County: Dodge County

DEMOGRAPHICS

GENDER	#OF YOUTH	%of YOUTH
Male	21	33%
Female	39	62%
I prefer not to say	1	1.6%

Engagement Level	#OF YOUTH	%OF YOUTH
Very Low	3	4.8%
Low	17	27.4%
Moderate	27	43.6%
High	8	13%
Very High	7	11%

Grade	#OF YOUTH
7th	2
8th	11
9th	10
10th	13
11th	9
12th	9
13th	7

DEVELOPMENTAL CONTEXT (PROGRAM QUALITY) EVALUATION RESULTS

Context matters! Research shows that youth programs that emphasize Sparks, Belonging, Caring Adults, Challenging Growth, and Youth-Adult Partnerships will have better outcomes for the youth who participate.

5.54

Youth Sparks

How 4-H programs give youth opportunities to explore topics they are interested in, passionate about, and engaged with.

5.81

Challenging Growth

The extent to which adults in the program help youth to see new possibilities, push them to reach higher and hold them accountable.

5.98

Youth Belonging

This outcome measures how safe, welcome and supported youth feel in 4-H programs

5.84

Youth-Adult Partnerships

How youth feel about adult volunteers working with them and if they feel respected, listened to and have their ideas taken seriously.

5.69

Caring Adults

This outcome measures how youth feel the adults in their 4-H programs care about them and investing time in youth.

5.77

Overall Program Quality Score

SCORING GUIDE

1.0 to 2.2	Very low quality
2.3 to 3.5	Low quality
3.6 to 4.8	Moderate quality
4.9 to 6.1	High quality
6.2 to 7.0	Very high quality



DEVELOPMENTAL CONTEXT SCORES BY GENDER

	Male (21)	Female (39)
Sparks	5.37	5.71
Belonging	5.90	6.07
Caring Adult	5.60	5.79
Challenging Growth	5.60	6.01
Youth-Adult Partnership	5.61	6.02

DEVELOPMENTAL CONTEXT SCORES BY ENGAGEMENT LEVEL

	Low (44)	Moderate (23)	High (8)
Sparks	4.82	5.71	6.03
Belonging	5.54	5.96	6.34
Caring Adult	5.22	5.75	6.50
Challenging Growth	5.40	5.74	6.56
Youth-Adult Partnership	5.41	5.44	6.50

SCORING GUIDE

1.0 to 2.2	Very low quality
2.3 to 3.5	Low quality
3.6 to 4.8	Moderate quality
4.9 to 6.1	High quality
6.2 to 7.0	Very high quality